

EFCUT Wood Chipper Shredder

SCP70-6.5H/9H/15H OWNER'S MANUAL



Important: please read owner's manual and the safety labels carefully before operation the machine.

CATALOG

I SAFETY.....	3
II ASSEMBLY.....	3
III OPERATIONS.....	4
IV MAINTENANCE.....	5-6
V TROUBLESHOOTING.....	7
VI EXPLODED VIEW OF THE MACHINE ...	8

I SAFETY

1.Safety labels:

Please read the safety labels on the machine carefully before starting the machine. Safety labels warn about machine hazards and ways to prevent injury.The owner of this machine MUST maintain the original location and readability of the labels on the machine.If any label is removed or becomes unreadable.REPLACE the label before using the machine again.

2.Safety warning:

- 2.1. Don't put your hand foot and any part of body enter hopper and funnel.
- 2.2. Don't put hand,foot and any of body closed to discharge opening while machine is operating.
- 2.3. Don't put peer into hopper or discharge opening when the machine is running.
- 2.4. Don't put metal,stone and something similar into machine.
- 2.5. Don't allow children to operate the machine.
- 2.6. Don't assemble or disassemble any parts of machine when in operation.
- 2.7 Don't allow children pets bystanders in operation zone.Keep them in a minimum of 10 meters far.
- 2.8. Don't run machine in an enclosed area since exhaust from engine contains carbon monoxide.
- 2.9. Don't wear loose clothes or long jewelry and keep your long hair under a headgear when operating machine.
- 2.10. Don't use machine on a slope or hard smooth floor.

II ASSEMBLY

The major components of the machine has been assembled at the factory.some of the parts will assemble by user.

1. On a clean,level surface,unpacking and checking contents.
2. Remove the machine from the crate and put it on shelf.
3. Remove the bolts,attach the front leg and the wheel assemble to the machine.
4. Do adjustment about rear output chute's cover plate.
5. Install the side chute on the machine,lock nuts.
6. Filling the engine oil and fuel (see the engine manual).

Notice: The engine does not have oil in it when shipped. Add oil before operating

III OPERATIONS

To operate the wood chipper shredder:

1. Make sure to fully understand the owner's manual and the warning labels before attempting start the machine.
2. Always wear safety glasses, hearing protection and leather gloves when operating this machine.
3. Keep loose clothing and long hair away from moving machinery.
4. Place the wood chipper/shredder on a flat and firm ground.
5. Check the oil and gas levels before starting the motor.
6. Place the bag over the chute and tie it securely in place when you using collecting bags.
7. Make sure the hopper and side chute are empty before starting the engine, If there is material in the hopper or side chute, the pull start cord may stop suddenly causing the wood chipper/shredder to fall over,or causing injury to your hand or arm.
8. Put on eye and ear protection, gloves. Start the wood chipper shredder as instructed in the engine manual,then set the throttle to fast.
9. Stand to the side of the hopper and side chute, make sure you have a stable stance and safe working area.

To start the machine:

1. Turn the fuel level to the ON position.
2. Set the choke level to the ON position.
3. Turn the engine ON/OFF switch.to the ON position.
4. Starting the engine.
5. Return the choke lever to the OFF position.
6. Adjust engine running speed.

To shred tree branches and leaves:

7. Slowly pour the small tree branches and leaves into the hopper, DO NOT try stuff too much material in at one time or the machine will jam.
8. Use small branches to push the material into the hopper if necessary. DO NOT use your hands!

Note: When the machine not actively shredding or chipping. Move the throttle to the idle position, or turn the wood chipper shredder OFF.

Shredding Tips:

- ▷ DO NOT feed branches excess of 1 cm diameter into the upside hopper.
- ▷ DO NOT feed material in excess of 3 inch diameter into the funnel. Large branches will cause the motor to stall.
- ▷ Feed tree branches and small leaves into the wood chipper/shredder slowly.
- ▷ Roots and dirty material will dull or damage the cutting blades.
- ▷ Avoid shredding wet leaves to reduce clogging. If you must shred wet material. Alternate wet and dry material when operating.
- ▷ Chipping fresh wood is easier on the machine and the blades will stay sharper longer.
- ▷ The wood chipper shredder will work best if the blades are sharp. Replace the blades as soon as wood chipper shredder performance begins to deteriorate.

IV MAINTENANCE

WARNING

Turn OFF the machine (see motor manual for instructions), allow all moving parts to completely stop, and disconnect the spark plug wire before moving the machine, emptying the bag, unclogging the inlets or outlets, or performing maintenance and repairs.

Normal Inspection

Before and after using the wood chipper shredder, closely inspect the machine for loose parts and damage.

- Check the hopper and side chute for cracks, holes and loose bolts.
- Check the body frame for cracks or damage.
- Check the engine oil level. See the motor manual for specifications

Cleaning

Clean the machine after each use. Brush off wood chips and wipe off the remaining dust from the exterior of the machine with a dry cloth. DO NOT rinse off the wood chipper/shredder with water. Clean up chips from the hopper and the discharge chute.

It is much harder to clean the machine if you allow it to sit for a while after use. You may need using an engine cleaner to remove resins from the motor. Engine cleaners are available at most auto parts stores.

Tighten or replace the belt

Tighten or replace the belt if you notice the chipper blades are not spinning.

1. Remove the pulley cover.
2. Loosen the nuts of engine.
3. Adjust the engine, tighten the belt and then tighten nuts of engine.
4. Install the pulley cover again, and reattach the spark plug wire.

Replacing Blades

If you notice ding-ding noise or cracks. Sharpen or replace the blades as soon as the chipping performance begins to deteriorate.

1. Remove the side cover plate to expose the blades.
2. Remove the blade, rotate the impeller, and remove the second blade.
3. Have the original blades professionally sharpened or order a replacement set, then re-install the blades.
4. Install the side cover plate and re-attach the spark plug wire.

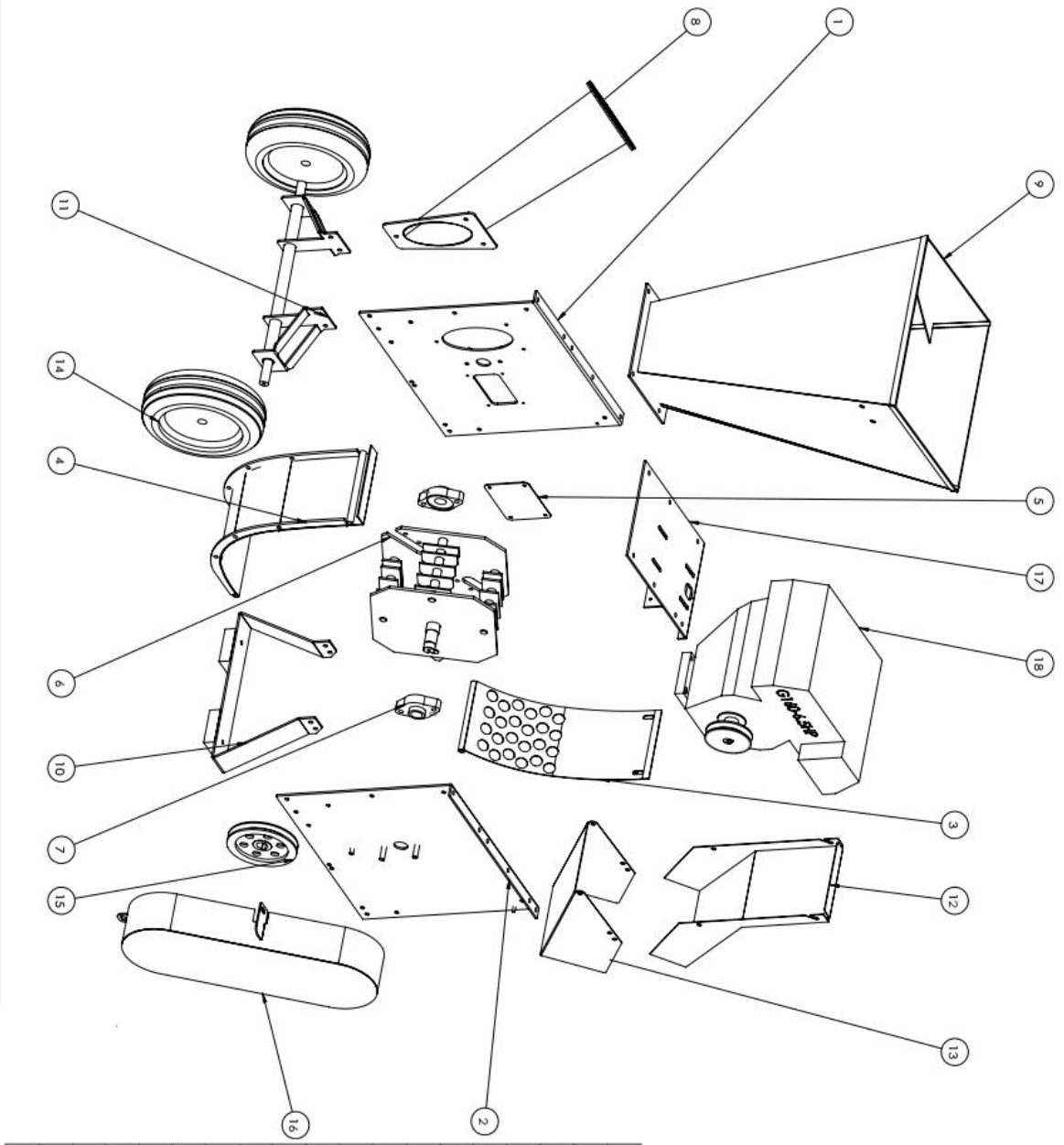
Storage Tips

Follow these guidelines when storing your wood chipper shredder.

- Remove the spark plug wire to prevent unauthorized starting.
- Empty the bag before storing to keep the mulch from rotting.
- Place the wood chipper shredder in a dry and level area. Store it in a well ventilate area.
- DO NOT store the wood chipper shredder near an ignition source, such as a wood stove, gas or electric heater etc.
- When storing for more than 30 days, you need to do maintenance according to the motor instructions for long term storage purpose.

V Troubleshooting

Symptom	Possible Cause	Possible Solution
Engine will not start	<ol style="list-style-type: none"> 1. Control levers are not in correct positions for starting 2. Spark plug wire is not connected to the spark plug, or the spark plug is bad. 3. No gasoline, or gasoline is old and stale. 4. Air filter is dirty. 5. Engine oil is low 6. Blocked fuel line 	<ol style="list-style-type: none"> 1. Make sure the ON/OFF switch is ON, the fuel shut-off valve is open, and the choke and throttle controls are in the start position. 2. Connect the spark plug wire or replace the spark plug. 3. If fuel tank is empty, then fill the tank. If full, drain the gasoline, and fill the tank with fresh gasoline. 4. Clean out the air filter. 5. Add oil to the engine. 6. Clean out the fuel line.
Engine does not run smoothly	<ol style="list-style-type: none"> 1. Engine is warm , and the choke is still in the CHOKE position. 2. Air filter is dirty. 3. Stale fuel, water or dirt in fuel, blocked the fuel line. 	<ol style="list-style-type: none"> 1. Move the choke to RUN position. 2. Clean the air filter. 3. Drain the fuel tank, clean out the fuel line, and fill the tank with fresh gasoline.
Engine overheats	<ol style="list-style-type: none"> 1. Chips and sawdust around the motor. 2. Dirty air filter. 	<ol style="list-style-type: none"> 1. Clean off the motor. 2. Clean out the air filter.
Machine vibrates or makes unusual noises	<ol style="list-style-type: none"> 1. Loose or damaged parts. 2. Impeller or blades have woody residue or chunks stuck to them. 	<ol style="list-style-type: none"> 1. Check the blades, hammers, impeller, and all connections, tighten, repair, or replace any loose or damaged parts. 2. Clean the impeller and blades.
Wood chipper shredder no longer chips or shreds well	<ol style="list-style-type: none"> 1. Dull or damaged blades and hammers. 2. Loose worn, or damaged belt. 	<ol style="list-style-type: none"> 1. Sharpen or replace blades and check the hammers for damage. 2. Replace or tighten belt.
Chips do not come out of the discharge chute or come out slowly.	<ol style="list-style-type: none"> 1. Discharge chute or hopper is clogged. 2. Insufficient motor RPM /s 	<ol style="list-style-type: none"> 1. Turn OFF the motor, disconnect the spark plug, then clean out the machine. 2. Move the throttle to FAST.



NO.	DESCRIBE	QTY
1	Side Panels 1	1
2	Side Panels 2	1
3	Sieve Plate	1
4	Arc Plate	1
5	Side window (change blades)	1
6	Blade System	1
7	Bearing	2
8	Side Feed Inlet	1
9	Lip Feed Inlet	1
10	Frame	1
11	Wheel Frame	1
12	Outlet Cover	1
13	Outlet	1
14	Tyre	2
15	Pulley	1
16	Belt Cover	1
17	Engine Floor	1
18	Engine	1